


Welcome

Thank you for joining the PMI® Authorized PMP® Exam Prep course.

If you've earned your CAPM® certification with us, welcome back!

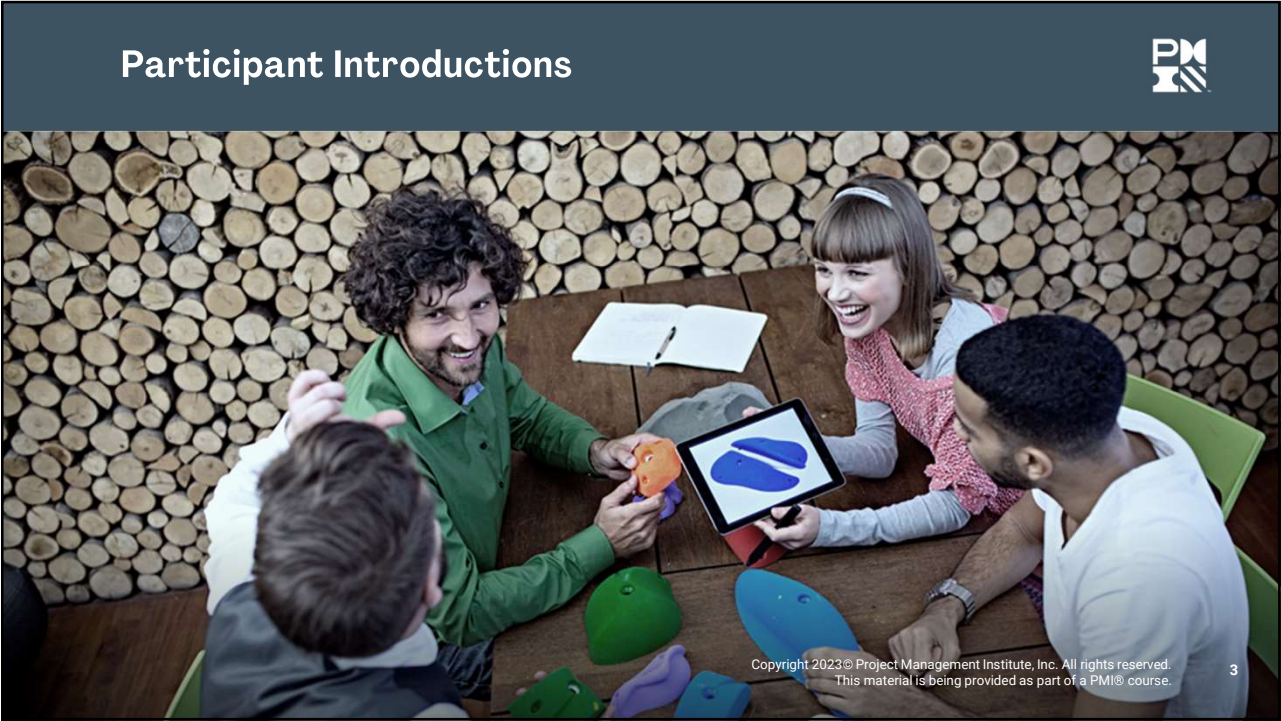
Or if you're coming from another project management background, certification or work experience, we are pleased to welcome you to PMI's community of learning.

We are proud of our 50-year history of peer-to-peer learning and membership and wish you the best of luck as you undertake your PMP® exam preparations.



Copyright 2023® Project Management Institute, Inc. All rights reserved.
This material is being provided as part of a PMI® course.

2



You, Getting Certified

- Four-year degree
- 36 months leading projects
- 35 hours of project management education/training or CAPM® certification

— OR —

- A high school diploma or an associate's degree (or global equivalent)
- 60 months leading projects
- 35 hours of project management education/training or CAPM® certification

The PMP logo is a circular emblem with a purple border. Inside the circle, the letters "PM" are stacked above a stylized graphic of three horizontal bars in orange, blue, and purple. Below this graphic, the letters "PMP" are written in a bold, purple, sans-serif font, followed by a registered trademark symbol (®).

Copyright 2023© Project Management Institute, Inc. All rights reserved.
This material is being provided as part of a PMI® course.

4

The Project Economy

The Project Economy backs the most important work all over the world.

No matter where you are, learning our core principles means you have a guided, lifetime practice in project management.



Copyright 2023® Project Management Institute, Inc. All rights reserved.
This material is being provided as part of a PMI® course.

5

The PMP® Exam

The PMP® exam includes content that spans the value delivery spectrum, including **predictive**, **adaptive** and **hybrid** approaches. It was updated in 2021 to reflect the fuller complement of skills and approaches found in our dynamic and global profession.

Just like the sides of the PMI Talent Triangle®, we focus on three performance domains in project management:

People | Power Skills – 42%

Process | Ways of Working – 50%

Business Environment | Business Acumen – 8%



Copyright 2023® Project Management Institute, Inc. All rights reserved.
This material is being provided as part of a PMI® course.

6

Learning Topics



The learning topics in this training come directly from the PMP® exam content outline (ECO). The ECO is the basis for the PMP® exam.

The relevant ECO content appears at the end of each topic, for your reference.

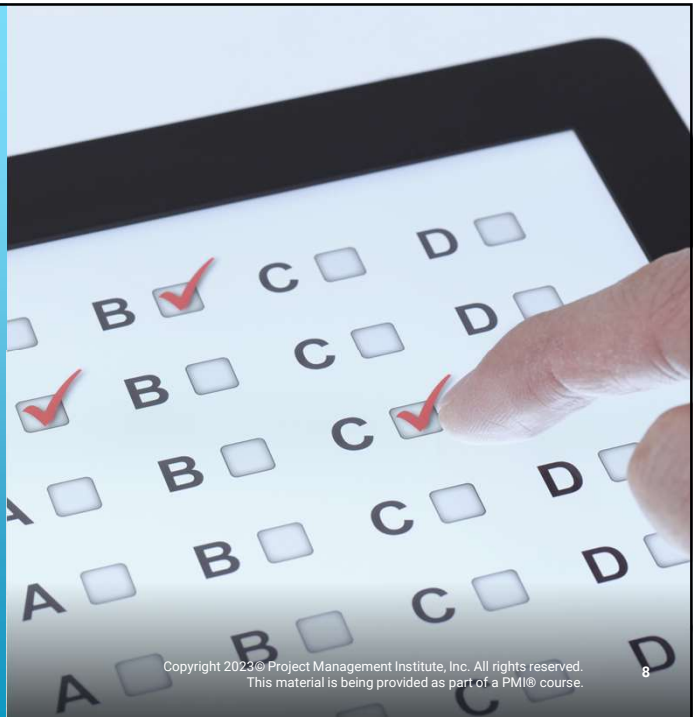
The ECO was created by a global selection of PMI members who hold the PMP® certification and work in diverse industries. It includes what they think you need to know to do the job, including experience and broader business concepts.

Copyright 2023© Project Management Institute, Inc. All rights reserved.
This material is being provided as part of a PMI® course.

7

The PMP® Exam Format

- 180 questions
- 230 minutes to complete the exam
- Two optional 10-minute breaks for computer-based (online-proctored) tests, including center-based tests; paper-based exams have no breaks
- Questions are multiple-choice, multiple response, matching, hotspot and fill-in-the-blank



Copyright 2023© Project Management Institute, Inc. All rights reserved.
This material is being provided as part of a PMI® course.

8

Contents

Lesson 1:
Business
Environment

Lesson 2:
Start the Project

Lesson 3:
Plan the Project

Lesson 4:
Lead the Team

Lesson 5:
Support the Project
Team

Lesson 6:
Close the
Project/Phase

Copyright 2023® Project Management Institute, Inc. All rights reserved.
This material is being provided as part of a PMI® course.

9

About This Course

- Life cycle icons:** To help highlight and differentiate concepts typical or unique to a certain life cycle, we use the corresponding icon:

Predictive

Adaptive

Hybrid
- Other icons**

Important

Interactive

Use Expert Judgment

Tools / Techniques

Question

Discussion

Note
- Project management terminology:** A course glossary is included as a PDF file. Your instructor may show definitions from the glossary on slides during the course.
Example: **Project Management**

Definition Slider

Defined words are **colored** or an asterisk (*) is placed next to them.

Copyright 2023® Project Management Institute, Inc. All rights reserved.
This material is being provided as part of a PMI® course.

10

Dr. Ahmed M. Hassan, PMO Director
+201115579996

5

Project Case Study:
Student Resource



SHAWPE

—INDUSTRIES—

Meet our **project manager, Ang Fen** and interact with him, the project team and stakeholders!

This is an immersive, fictional scenario of a hybrid project which includes review and reinforcement of project management concepts and practice exam questions.



Copyright 2023® Project Management Institute, Inc. All rights reserved.
This material is being provided as part of a PMI® course.

11

Shawpe Lifestyle Centre (SLC) Project



LIFESTYLE CENTRE

The project team will develop and build a “lifestyle centre” in the historic Oasestown district, including design and occupancy of retail and community spaces

- Funding partner: Oasestown Municipality
- Development partner: Oases Architects
- US \$7 million initial capital budget
- 36-month timeline



Copyright 2023® Project Management Institute, Inc. All rights reserved.
This material is being provided as part of a PMI® course.

12

